



Innovative Photonic Solutions

Lightlines

OBLIQUE **18" Open Architecture**

Illumination Technologies provides high performance fiberoptic lighting systems for web applications. Our lightlines are manufactured with superior output uniformity (+/-10%) providing excellent machine vision performance. Off-the-shelf and OEM configurations available; contact our Application Engineers to see how we might tailor a system to meet your application requirements.

KEY FEATURES

- **Patented Oblique Lightline**
- Detects Defects in Direction of Travel
- Provides Off-Axis Side Lighting Mode
- **E-Z Glide** Adjustable Lens Assy
- Open Architecture for OEM Integration
- High Intensity Output Maximizes Contrast
- Seamless Modules for Excellent Uniformity
- Available in Lengths to 2 meters

APPLICATIONS

- Steel Scratch & Rub
- Aluminum Scratch
- Coated Paper Streaks
- Plastic Brush Defects
- Wood Lamination Bubbles
- Glass Micro Cracks



Detect **"Direction of Travel"** **Defects**

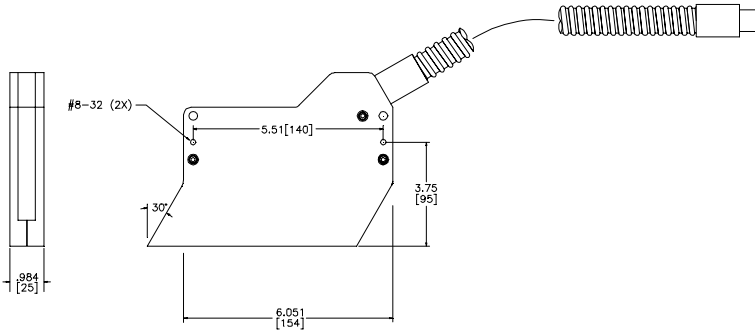
The **OBLIQUE** Modular Lightline system provides continuous, high intensity side lighting. The 9180-OA-18 shown above provides an 18" lighted length for the detection of a variety of difficult to detect defects aligned in the direction of web travel including scratches, rubs, streaks and cracks.

The Open Architecture format allows for the direct integration of this technology in OEM equipment. Utilizing the latest version of our patent pending **E-Z Glide** lens system, the light may be focused precisely to form highly structured lighting. This focus control is accomplished using a single rotary adjustment which maintains the output uniformity over the entire adjustment range. This is the only lens design in the market today that provides this level of robust performance, especially when it comes to long web widths.

The Open Architecture design is used for inclusion within OEM equipment, installation in clean manufacturing environment, and for prototype and feasibility development in the laboratory. For production installation in challenging environments, the NEMA version of these configurations are also available (see Part Numbering guide on back of this sheet).

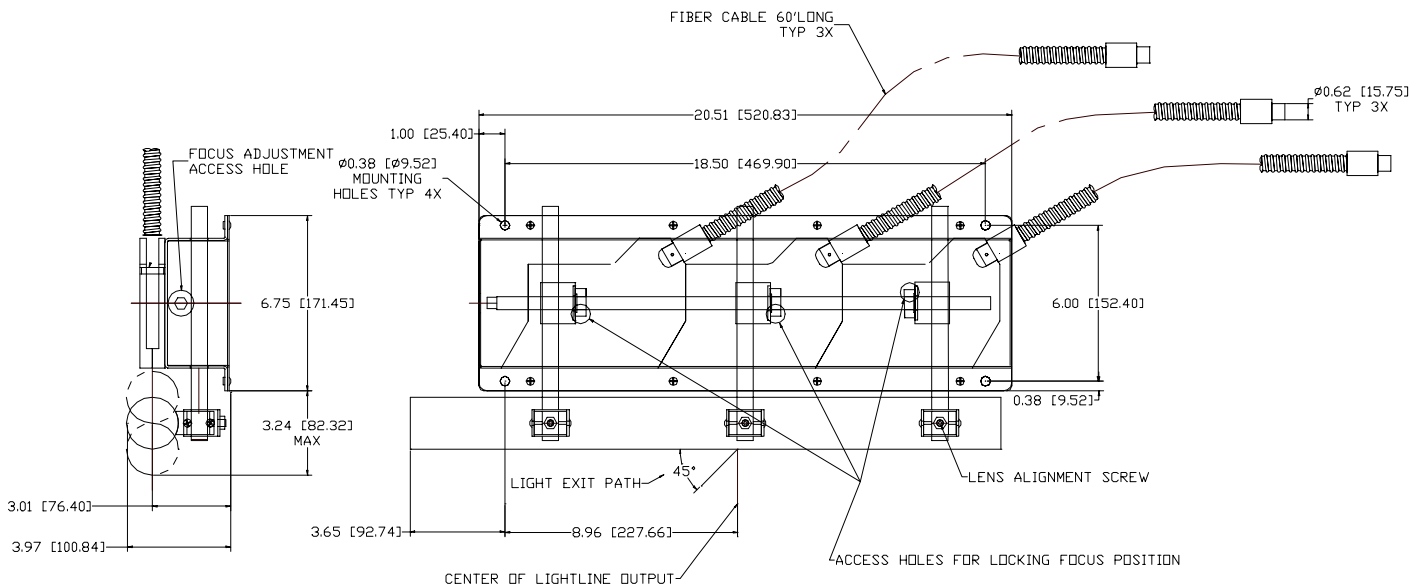
9180 Series

Oblique Modular Lightline



9180 Series

Similar to the 9170 series Lightline modules, the 9180 series is configured with the output fibers precisely angled to provide a cross-web illumination component. This side lighting component provides strong contrast enhancement for defects which are aligned in the direction of web travel, and other “dark field” line applications. Modules can be purchased separately for OEM applications, or in NEMA or open architecture formats.



9180-OA-18

Complete systems - the above drawing is a standard 18” oblique lighting system utilizing an open architecture platform with the E-Z Glide lens system. The basic 9180 building blocks can be configured for a variety of systems lengths up to and exceeding 2 meters (80”) in length. NEMA 12 (European IP65) versions are also available. To request pricing information, please use the following part numbering system:

Family Active Length in inches
P/N 9180-SS-NN
 Style OA: Open Architecture
 NM: NEMA Enclosure

Proudly Distributed By:



Innovative Photonic Solutions

Illumination Technologies, Inc.

5 Adler Drive 1 East Syracuse 1 New York 13057 USA

TEL: 315-463-4673 1 FAX: 315-463-1401 1 Toll Free (North America): 800-738-4297

Web: <http://www.illuminationtech.com> 1 E-mail: info@illuminationtech.com

Large Web